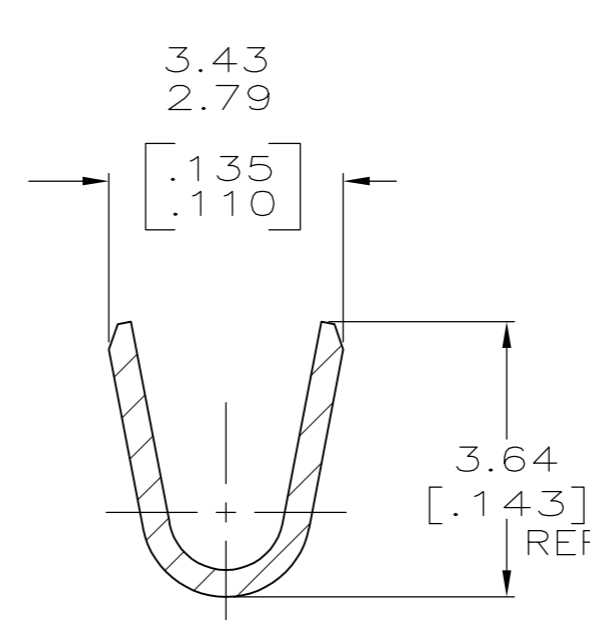
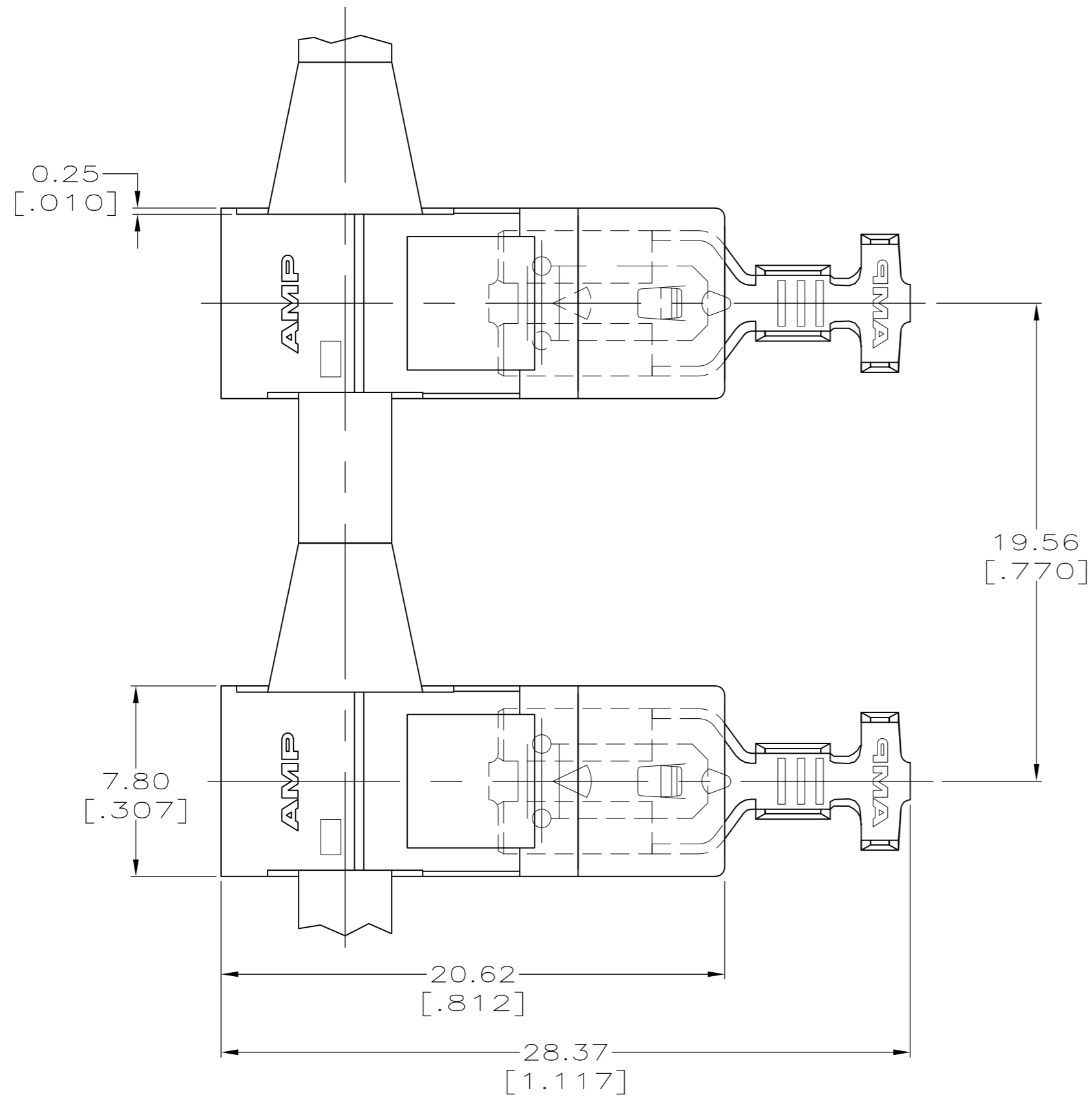


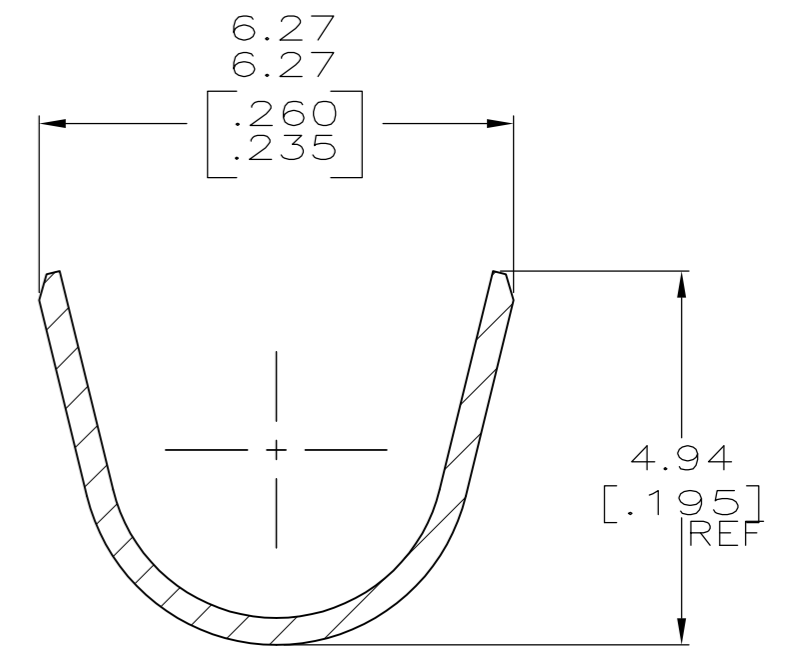
THIS DRAWING IS UNPUBLISHED. RELEASED FOR PUBLICATION
 © COPYRIGHT - By - ALL RIGHTS RESERVED.

LOC	DIST	REVISIONS			
P	LTR	DESCRIPTION	DATE	DWN	APVD
AF	50				
		E	REVISED PER ECR-12-013219	08JAN13	KH KR

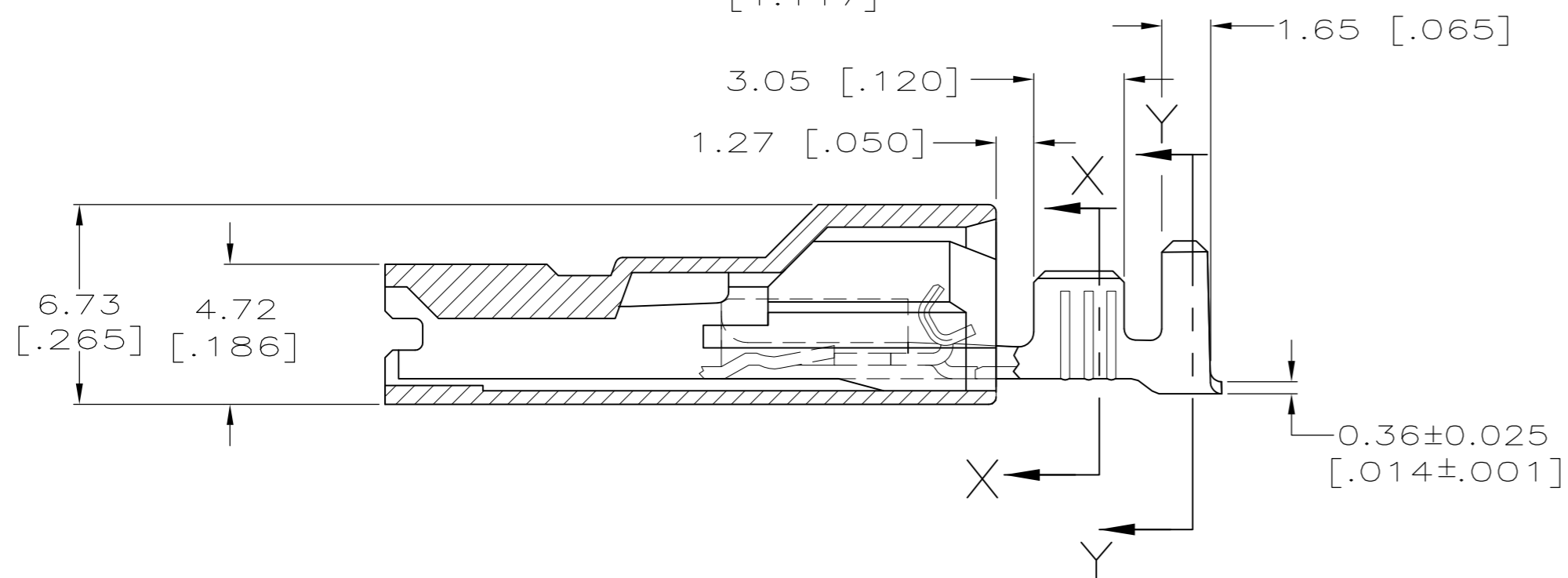
- 1 WIRE SIZE IS [#18-#14] AWG.
- 2 INSULATION RANGE IS 2.79-4.57[.110-.180] DIA.
 2.79-3.56 [.110-.140] DIA - CRIMP WIDTH 4.57 [.180], F TYPE
 3.56-4.57 [.140-.180] DIA - CRIMP WIDTH 4.57 [.180], O TYPE
- 3 MATING TAB THK TO BE 0.51±0.025[.020±.001]



SECTION X-X
SCALE 10:1



SECTION Y-Y
SCALE 10:1



0.001016 [.000040] MIN TIN	521271-2
-	521271-1
TERMINAL / MATERIAL	PART NO.

THIS DRAWING IS A CONTROLLED DOCUMENT.		DWN	JR RUTH	24FEB00		TE Connectivity		
DIMENSIONS: mm [INCHES]		CHK	MS FEHER	24FEB00		ASSEMBLY, RECEPT, POSI-LOCK, ULTRA-POD, 4.75 [.187] SERIES		
TOLERANCES UNLESS OTHERWISE SPECIFIED:		APVD	J HUMMEL	24FEB00		SIZE	CAGE CODE	DRAWING NO
0 PLC ± - 1 PLC ± - 2 PLC ± 0.25 [.010] 3 PLC ± - 4 PLC ± - ANGLES ± -		PRODUCT SPEC	-			A2	00779	C=521271
MATERIAL		APPLICATION SPEC	-		WEIGHT	-		
TERMINAL - BRASS		FINISH	-		CUSTOMER DRAWING		SCALE 5:1	
HOUSING - 6/6 NYLON, V2		TERMINAL - SEE TABLE	-		SHEET 1 of 1		REV E	
HOUSING - NATURAL		RESTRICTED TO		-				