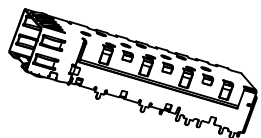


SFP Cage - Exploded View

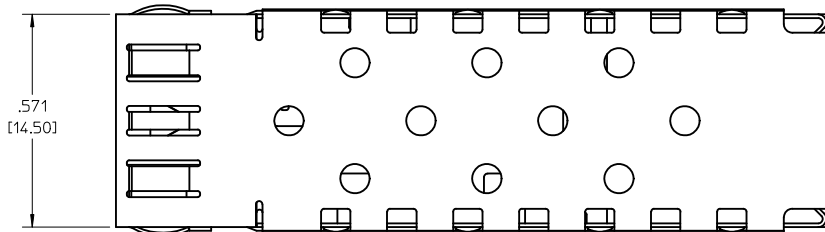
- 1 Material tin plated phosphor-bronze or comparable alloy .010" thick.
- 2 Cage accepts all MSA Small Form-factor Pluggable adapters such as Molex patch cable assembly 73929.
- 3 Sales Drawing Set SD-73927-001 depicts details of press-fit version of cage.
- 4 Sales Drawing Set SD-73927-003 depicts details of surface mount version of cage.

ASSOCIATED PARTS	
MATERIAL NO.	DESCRIPTION
73927-0020	SFP CAGE COVER
73927-0040	SFP CAGE BASE

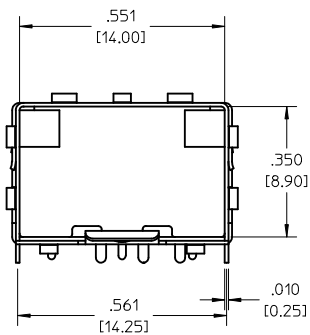
RE-RELEASE - FIX GLITCH EC NO: USY2010-0495 DRWN:MMCKERVEY2010/04/19 CHKD:KJANOTA 2010/04/27 APPR:KJANOTA 2010/04/28	QUALITY SYMBOLS	GENERAL TOLERANCES (UNLESS SPECIFIED)	SCALE 3:1	DESIGN UNITS METRIC	THIRD ANGLE PROJECTION	REVISE ON CAD ONLY
	DESCRIPTION ▼ = 0 ∇ = 0	mm	INCH	DIMENSION STYLE IN/MM		TITLE SFP CAGE ASSEMBLY SOLDER POST VERSION
		4 PLACES ± .005	± .005	DRAWN BY DIRKERS	DATE 2000/09/05	
	3 PLACES ± .005	± .005	CHECKED BY DOYE	DATE 2000/09/05		
2 PLACES ± .005	± .005	APPROVED BY RUSSELL	DATE 2000/09/05			
1 PLACE ± 0.13	± .005	ANGULAR ± 1/2°	DRAFT WHERE APPLICABLE MUST REMAIN WITHIN DIMENSIONS		MOLEX INCORPORATED MATERIAL NO. 73927-0002 DOCUMENT NO. SD-73927-002 SHEET NO. 1 OF 6	
B1	REV	THIS DRAWING CONTAINS INFORMATION THAT IS PROPRIETARY TO MOLEX INCORPORATED AND SHOULD NOT BE USED WITHOUT WRITTEN PERMISSION				B



ISOMETRIC
SCALE 1:1



.571
[14.50]

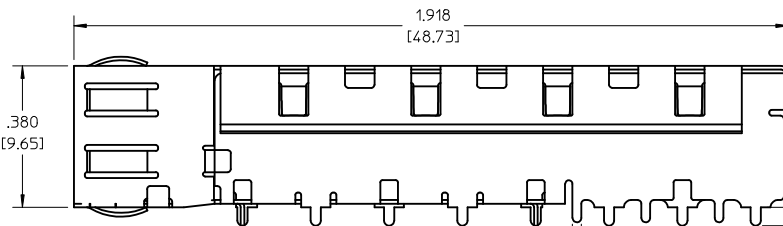


.551
[14.00]

.350
[8.90]

.561
[14.25]

.010
[0.25]



1.918
[48.73]

.380
[9.65]

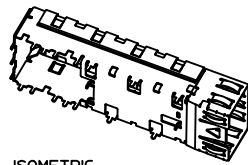
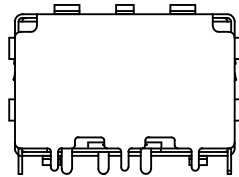
.049
[1.25]

.028
[0.70]
Typ - 11 places

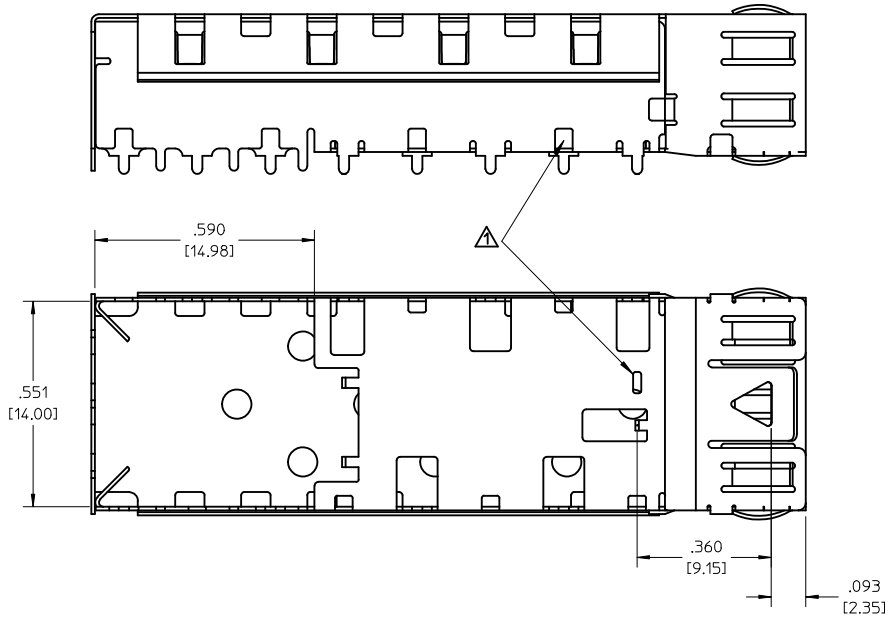
.024
[0.60]
Typ - 9 places

1 Solder posts sized to fit MSA standard hole pattern and sizes

RE-RELEASE - FIX GLITCH EC NO: USY2010-0495 DRWN:MMCKERVE/2010/04/19 CHKD:KJANOTA 2010/04/27 APPR:KJANOTA 2010/04/28	QUALITY SYMBOLS	GENERAL TOLERANCES (UNLESS SPECIFIED)	SCALE 5:1	DESIGN UNITS METRIC	THIRD ANGLE PROJECTION	REVISE ON CAD ONLY															
	▽ = 0 ∇ = 0	<table border="1"> <thead> <tr> <th></th> <th>mm</th> <th>INCH</th> </tr> </thead> <tbody> <tr> <td>4 PLACES</td> <td>± .005</td> <td>± .0005</td> </tr> <tr> <td>3 PLACES</td> <td>± .005</td> <td>± .0005</td> </tr> <tr> <td>2 PLACES</td> <td>± .005</td> <td>± .0005</td> </tr> <tr> <td>1 PLACE</td> <td>± 0.13</td> <td>± .005</td> </tr> </tbody> </table>		mm	INCH	4 PLACES	± .005	± .0005	3 PLACES	± .005	± .0005	2 PLACES	± .005	± .0005	1 PLACE	± 0.13	± .005	DIMENSION STYLE IN/MM		TITLE	
				mm	INCH																
	4 PLACES	± .005	± .0005																		
3 PLACES	± .005	± .0005																			
2 PLACES	± .005	± .0005																			
1 PLACE	± 0.13	± .005																			
B1	ANGULAR ±1/2°	DRAFT WHERE APPLICABLE MUST REMAIN WITHIN DIMENSIONS	DRAWN BY DIRKERS	DATE 2000/09/05	SFP CAGE ASSEMBLY SOLDER POST VERSION																
			CHECKED BY DOYE	DATE 2000/09/05	MOLEX INCORPORATED																
			APPROVED BY RUSSELL	DATE 2000/09/05	MATERIAL NO. 73927-0002	DOCUMENT NO. SD-73927-002															
			THIS DRAWING CONTAINS INFORMATION THAT IS PROPRIETARY TO MOLEX INCORPORATED AND SHOULD NOT BE USED WITHOUT WRITTEN PERMISSION		SHEET NO. 2 OF 6	B															

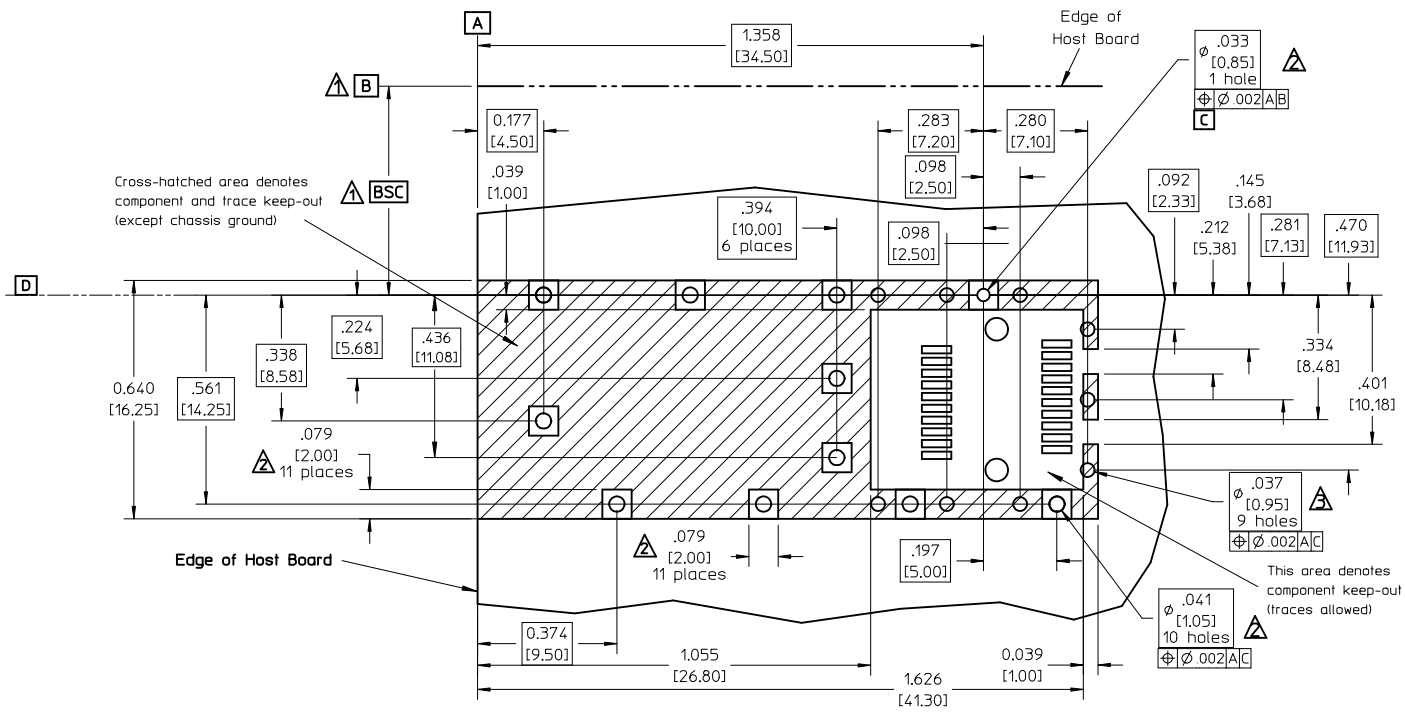


ISOMETRIC
SCALE 1:1



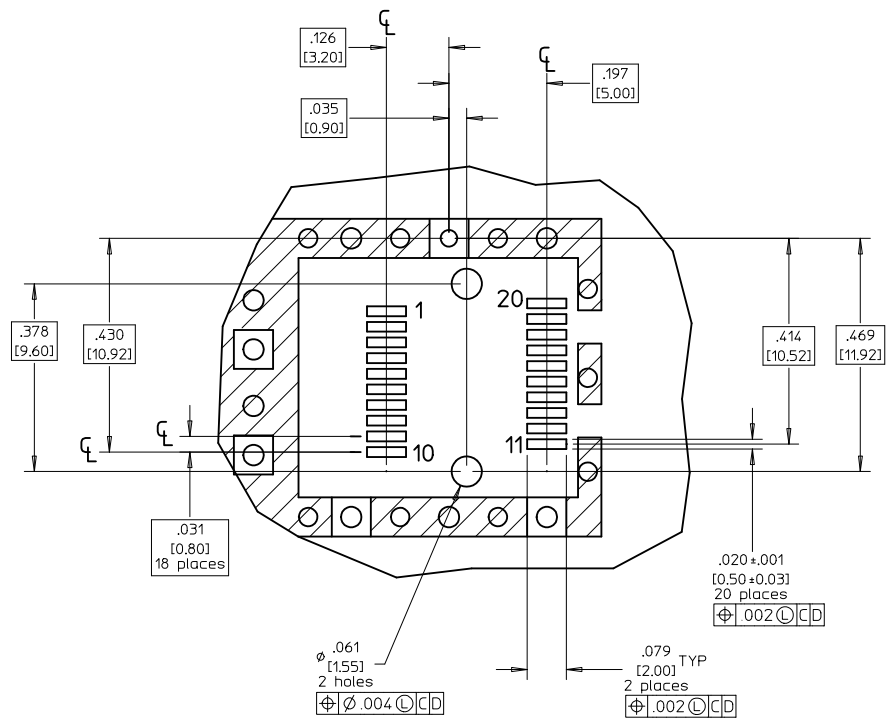
▲ Countercuts accept press-fit pins or solder posts of cage mounted on underside of same host PCB.

RE-RELEASE - FIX GLITCH EC NO: USY2010-0495 DRWN:MMCKERVEY2010/04/19 CHKD:KJANOTA 2010/04/27 APPR:KJANOTA 2010/04/28	QUALITY SYMBOLS	GENERAL TOLERANCES (UNLESS SPECIFIED)	SCALE 5:1	DESIGN UNITS METRIC	THIRD ANGLE PROJECTION	REVISE ON CAD ONLY																															
	DESCRIPTION ▼ = 0 ∇ = 0	<table border="1"> <thead> <tr> <th></th> <th>mm</th> <th>INCH</th> </tr> </thead> <tbody> <tr> <td>4 PLACES</td> <td>± ---</td> <td>± ---</td> </tr> <tr> <td>3 PLACES</td> <td>± ---</td> <td>± .005</td> </tr> <tr> <td>2 PLACES</td> <td>± ---</td> <td>± ---</td> </tr> <tr> <td>1 PLACE</td> <td>± 0.13</td> <td>± ---</td> </tr> </tbody> </table>		mm	INCH	4 PLACES	± ---	± ---	3 PLACES	± ---	± .005	2 PLACES	± ---	± ---	1 PLACE	± 0.13	± ---	<table border="1"> <thead> <tr> <th colspan="2">DIMENSION STYLE</th> </tr> <tr> <th colspan="2">IN/MM</th> </tr> </thead> <tbody> <tr> <td>DRAWN BY</td> <td>DATE</td> </tr> <tr> <td>DIRKERS</td> <td>2000/09/05</td> </tr> <tr> <td>CHECKED BY</td> <td>DATE</td> </tr> <tr> <td>DOYE</td> <td>2000/09/05</td> </tr> <tr> <td>APPROVED BY</td> <td>DATE</td> </tr> <tr> <td>RUSSELL</td> <td>2000/09/05</td> </tr> </tbody> </table>	DIMENSION STYLE		IN/MM		DRAWN BY	DATE	DIRKERS	2000/09/05	CHECKED BY	DATE	DOYE	2000/09/05	APPROVED BY	DATE	RUSSELL	2000/09/05	DIMENSION STYLE IN/MM	TITLE	
			mm	INCH																																	
		4 PLACES	± ---	± ---																																	
3 PLACES	± ---	± .005																																			
2 PLACES	± ---	± ---																																			
1 PLACE	± 0.13	± ---																																			
DIMENSION STYLE																																					
IN/MM																																					
DRAWN BY	DATE																																				
DIRKERS	2000/09/05																																				
CHECKED BY	DATE																																				
DOYE	2000/09/05																																				
APPROVED BY	DATE																																				
RUSSELL	2000/09/05																																				
B1	DRAFT WHERE APPLICABLE MUST REMAIN WITHIN DIMENSIONS	ANGULAR ±1/2° THIS DRAWING CONTAINS INFORMATION THAT IS PROPRIETARY TO MOLEX INCORPORATED AND SHOULD NOT BE USED WITHOUT WRITTEN PERMISSION	MOLEX INCORPORATED MATERIAL NO. 73927-0002	SD-73927-002 DOCUMENT NO.	SHEET NO. 3 OF 6																																



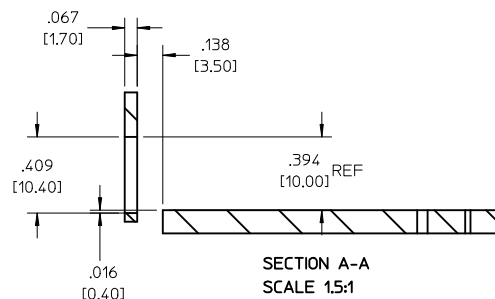
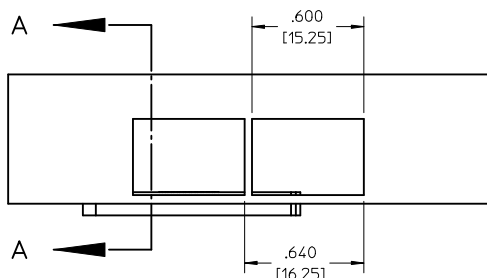
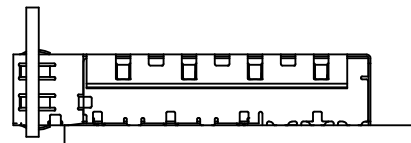
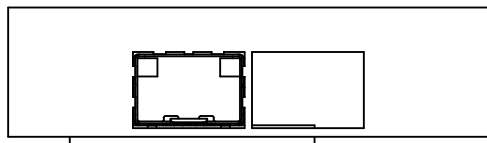
- ▲ Datum and basic dimensions established by customer.
- ▲ Vias and pads chassis ground, plated through, 11 places. Pads optional.
- ▲ Holes optionally plated through.
- 4. Hole pattern allows two parts to be mounted "belly-to-belly" on .090-.125" nom. boards. Hole layout shown for one side only. Transceiver profile determines minimum board thickness in "belly-to-belly" applications.
- 5. "Belly-to-belly" mounting on boards < .090" nom. requires modifying some cage features.

RE-RELEASE - FIX GLITCH EC NO: USY2010-0495 DRWN:MMCKERVEY 2010/04/19 CHKD:KJANOTA 2010/04/27 APPR:KJANOTA 2010/04/28	QUALITY SYMBOLS	GENERAL TOLERANCES (UNLESS SPECIFIED)	SCALE 3:1	DESIGN UNITS METRIC	THIRD ANGLE PROJECTION	REVISE ON CAD ONLY
	DESCRIPTION ▼ = 0 ∇ = 0	4 PLACES ± --- ± --- 3 PLACES ± --- ± .005 2 PLACES ± --- ± --- 1 PLACE ± 0.13 ± ---	DIMENSION STYLE IN/MM	TITLE		
		ANGULAR ± 1/2° DRAFT WHERE APPLICABLE MUST REMAIN WITHIN DIMENSIONS	DRAWN BY DIRKERS CHECKED BY DOYE APPROVED BY RUSSELL	DATE 2000/09/05 DATE 2000/09/05 DATE 2000/09/05	SFP CAGE ASSEMBLY SOLDER POST VERSION	
	B1			MOLEX INCORPORATED		MATERIAL NO. 73927-0002 DOCUMENT NO. SD-73927-002 SHEET NO. 4 OF 6



- 1 Hole pattern shown depicts both sets of holes needed for mounting two cages "belly-to-belly".
- 2 Connector pad pattern per MSA, will accommodate surface mount Molex connector 74441-0001 or equivalent.

RE-RELEASE - FIX GLITCH EC NO: USY2010-0495 DRWN: MMCKERVEY 2010/04/19 CHKD: KJANOTA 2010/04/27 APPR: KJANOTA 2010/04/28	QUALITY SYMBOLS ▽ = 0 ∇ = 0	GENERAL TOLERANCES (UNLESS SPECIFIED)		SCALE 3:1	DESIGN UNITS METRIC	THIRD ANGLE PROJECTION	REVISE ON CAD ONLY
		4 PLACES ± --- ± --- 3 PLACES ± --- ± .005 2 PLACES ± --- ± --- 1 PLACE ± 0.13 ± ---	DIMENSION STYLE IN/MM	TITLE SFP CAGE ASSEMBLY SOLDER POST VERSION			
		DRAFT WHERE APPLICABLE MUST REMAIN WITHIN DIMENSIONS		DRAWN BY DIRKERS	DATE 2000/09/05	MOLEX INCORPORATED	
				CHECKED BY DOYE	DATE 2000/09/05	MATERIAL NO. 73927-0002	DOCUMENT NO. SD-73927-002
B1	REV			APPROVED BY RUSSELL		DATE 2000/09/05	THIS DRAWING CONTAINS INFORMATION THAT IS PROPRIETARY TO MOLEX INCORPORATED AND SHOULD NOT BE USED WITHOUT WRITTEN PERMISSION



1 Relational geometry per MSA standard.

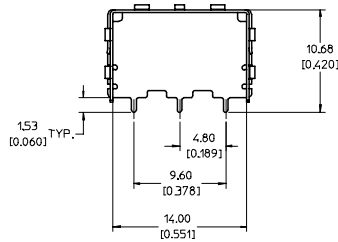
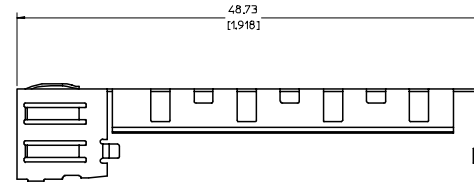
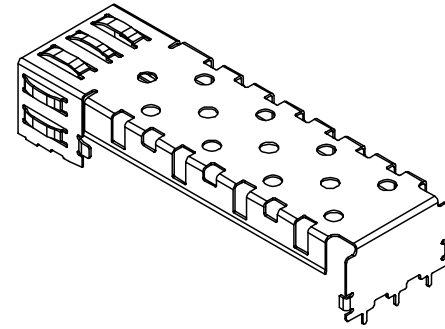
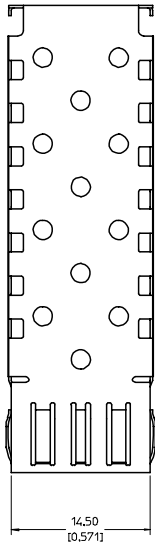
RE-RELEASE - FIX GL TICH	QUALITY SYMBOLS
EC NO: USY2010-0495	▽ = 0
DRWN:MMCKERVEY2010/04/19	▽ = 0
CHKD:KJANOTA 2010/04/27	
APPR:KJANOTA 2010/04/28	
B1	

DESCRIPTION
▽ = 0
▽ = 0

GENERAL TOLERANCES (UNLESS SPECIFIED)
4 PLACES ± --- ± ---
3 PLACES ± --- ± .005
2 PLACES ± --- ± ---
1 PLACE ± 0.13 ± ---
ANGULAR ± 1/2°
DRAFT WHERE APPLICABLE
MUST REMAIN WITHIN DIMENSIONS

SCALE 3:1	DESIGN UNITS METRIC
DIMENSION STYLE IN/MM	
DRAWN BY DIRKERS	DATE 2000/09/05
CHECKED BY DOYE	DATE 2000/09/05
APPROVED BY RUSSELL	DATE 2000/09/05

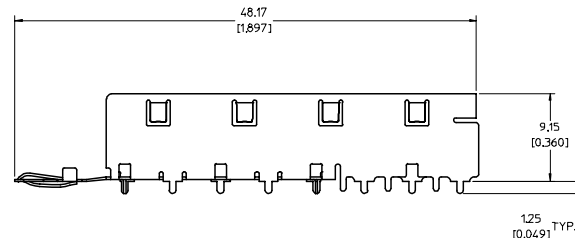
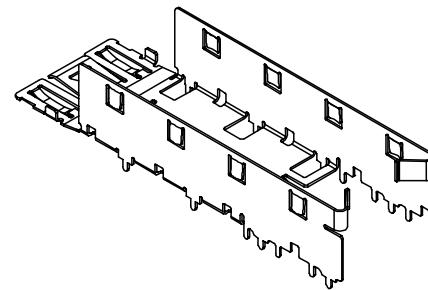
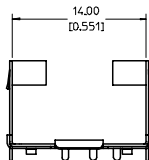
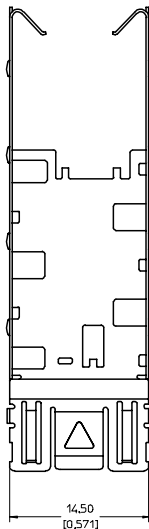
THIRD ANGLE PROJECTION	REVISE ON CAD ONLY
TITLE SFP CAGE ASSEMBLY SOLDER POST VERSION	
MOLEX INCORPORATED	
MATERIAL NO. 73927-0002	DOCUMENT NO. SD-73927-002
SHEET NO. 6 OF 6	
THIS DRAWING CONTAINS INFORMATION THAT IS PROPRIETARY TO MOLEX INCORPORATED AND SHOULD NOT BE USED WITHOUT WRITTEN PERMISSION	



NOTES:

1. MATERIAL: COPPER ALLOY
2. PLATING: BRIGHT TIN
2.54 MICROMETERS TIN (MIN)
OVER 0.76 MICROMETERS (MIN) NICKEL
3. FOR DETAILS OF PCB AND BEZEL LAYOUT REFER TO DOCUMENT SD-73927-100.
4. THIS PRODUCT NOT INTENDED FOR LEAD FREE, (RoHS), REFLOW PROCESS.
REFLOW TEMPERATURE SHOULD NOT EXCEED 180°C
5. FOR RoHS COMPLIANT REPLACEMENTS REFER TO MOLEX SERIES 74737.

ENTER DESCRIPTION EC NO: UST2006-0264 DRAWN BY: DRWNSKIMONSON 2006/07/03 CHECKED BY: CHFKBRUSSELL 2006/07/06 APPR: BRUSSELL 2006/07/24	QUALITY SYMBOLS ▽=0 ▽=0	GENERAL TOLERANCES (UNLESS SPECIFIED)		DIMENSION STYLE MM/IN		SCALE 4:1	DESIGN UNITS METRIC	THIRD ANGLE PROJECTION
		4 PLACES ± --- ± --- 3 PLACES ± --- ± .005 2 PLACES ± 0.13 ± .01 1 PLACE ± 0.25 ± --- ANGULAR ± 1 °	mm INCH	DRAWN BY KS IMONSON	DATE 2005/10/12	TITLE SFP CAGE COVER		
REV A	DESCRIPTION	DRAFT WHERE APPLICABLE MUST REMAIN WITHIN DIMENSIONS		MATERIAL NO. 739270020	DATE 2005/10/12	MOLEX INCORPORATED		SHEET NO. 1 OF 1
				DOCUMENT NO. SD-73927-0020	THIS DRAWING CONTAINS INFORMATION THAT IS PROPRIETARY TO MOLEX INCORPORATED AND SHOULD NOT BE USED WITHOUT WRITTEN PERMISSION			



NOTES:

1. MATERIAL: COPPER ALLOY
2. PLATING: BRIGHT TIN
2.54 MICROMETERS TIN (MIN)
OVER 0.76 MICROMETERS (MIN) NICKEL
3. FOR DETAILS OF PCB AND BEZEL LAYOUT REFER
TO DOCUMENT SD-73927-100.
4. THIS PRODUCT NOT INTENDED FOR LEAD FREE, (RoHS), REFLOW PROCESS.
REFLOW TEMPERATURE SHOULD NOT EXCEED 180°C
5. FOR RoHS COMPLIANT REPLACEMENTS REFER TO MOLEX SERIES 74737.

ENTER DESCRIPTION EC NO: UST2006-0264 DRAWN BY: DRINKS IMONSON 2006/07/03 CHECKED BY: CHUCK BRUSSELL 2006/07/06 APPR: BRUSSELL 2006/07/24	QUALITY SYMBOLS	GENERAL TOLERANCES (UNLESS SPECIFIED)	DIMENSION STYLE	SCALE	DESIGN UNITS	THIRD ANGLE PROJECTION
	▼=0 ▽=0	mm INCH 4 PLACES ± --- ± --- 3 PLACES ± --- ± .005 2 PLACES ± 0.13 ± .01 1 PLACE ± 0.25 ± --- ANGULAR ± 1 °	MM/IN DRAWN BY: KS IMONSON DATE: 2005/10/12 CHECKED BY: BRUSSELL DATE: 2005/10/12 APPROVED BY: BRUSSELL DATE: 2005/10/12	4:1	METRIC	
DRAFT WHERE APPLICABLE MUST REMAIN WITHIN DIMENSIONS	MATERIAL NO. 739270040	DOCUMENT NO. SD-73927-0040	TITLE SFP CAGE BASE SOLDER POSTS FOR WAVE SOLDER		MOLEX INCORPORATED	SHEET NO. 1 OF 1
THIS DRAWING CONTAINS INFORMATION THAT IS PROPRIETARY TO MOLEX INCORPORATED AND SHOULD NOT BE USED WITHOUT WRITTEN PERMISSION						