

# Apollo2 EVB Quick Start Guide

**Doc ID: QS-A2-1p00**

**Revision 1.0**

**June 2017**

---

**Revision 1.0, June 2017**

---

**Table of Content**

1. Introduction.....	3
2. Documentation Revision History.....	3
3. Overview of the Apollo2 EVB .....	4
4. Debug Interface .....	6
5. Software Development Tools for the Apollo2 EVB .....	9
6. Measuring MCU Power Consumption on the EVB .....	10

## 1. Introduction

This document provides guidance in setting up the Apollo2 Evaluation Board (EVB), revision 1.0, to get started executing code examples, measuring power consumption in various configurations, and beginning software development. This initial board release supports 3.3V operation only.

## 2. Documentation Revision History

Rev #	Date	Description
1.00	Jun 2017	Document initial public release

### 3. Overview of the Apollo2 EVB

The Apollo2 EVB features Arduino-compatible headers and an integrated J-Link debugger:

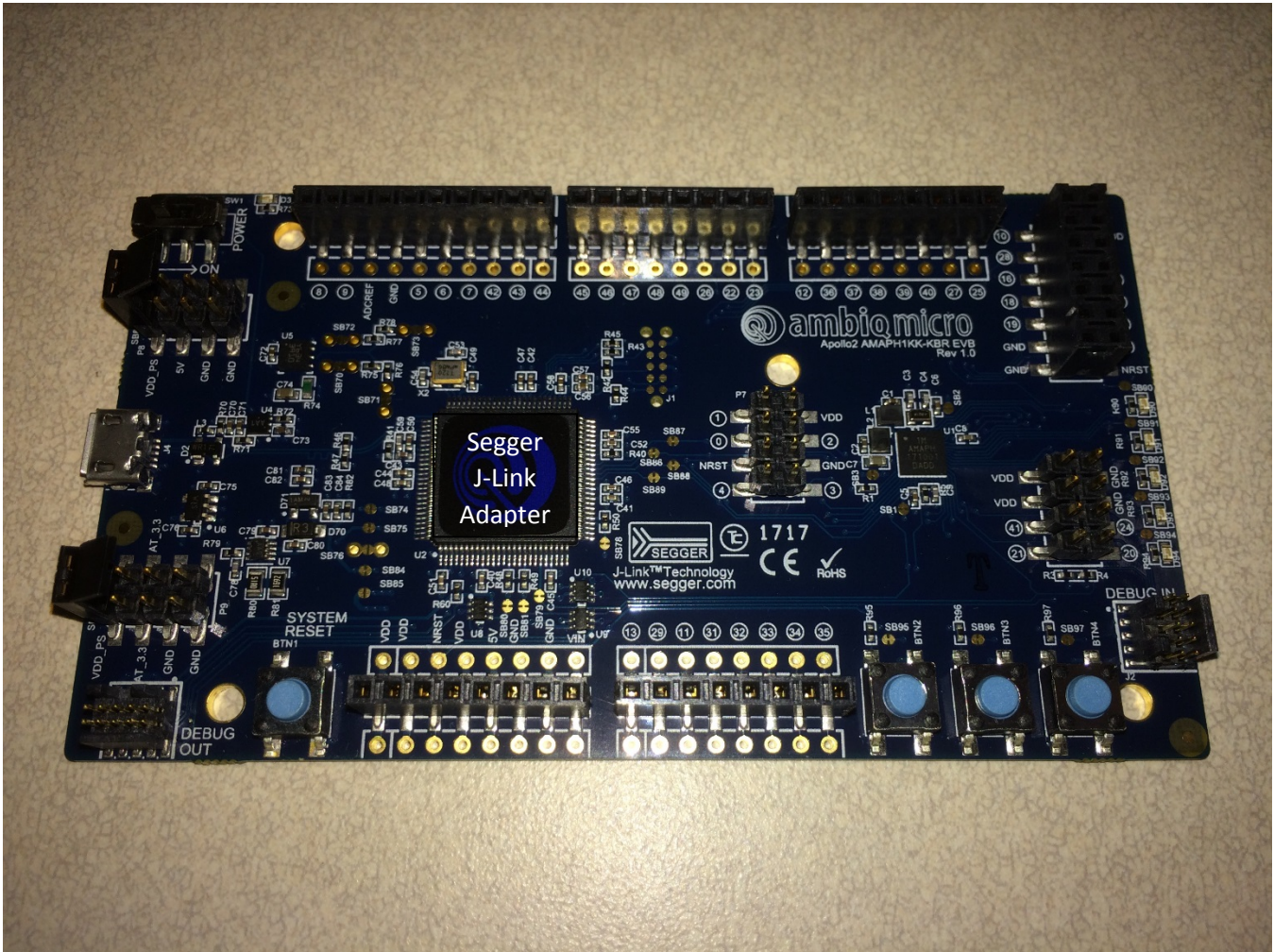


Figure 1. Apollo2 EVB

This EVB has these additional features:

- Low power reference design
- Apollo2 MCU in the BGA package (AMAPH1KK-KBR)
- Multiple power/clock options
- Micro USB connector for power/download/debug

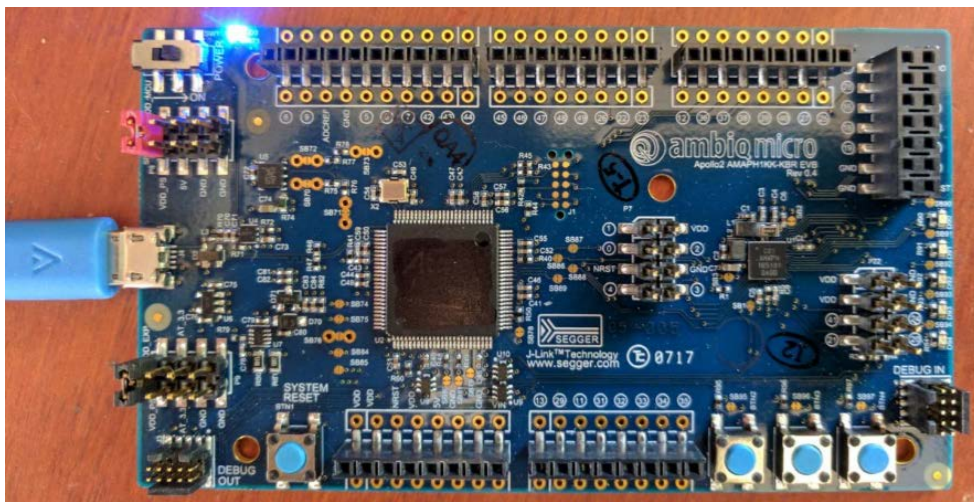
**Revision 1.0, June 2017**

---

- Segger J-Link debugger
- Debugger-in / debugger-out ports
- Five user-controlled LEDs
- Three push buttons for application use, plus a reset push button
- Power slide switch with LED power indicator
- Five 8-12 pin Arduino-style headers for pin/power access to shield board(s)
- Multiple test points for power measurements
- CE Mark and RoHS compliant

## 4. Debug Interface

Figure 2 shows the Apollo2 EVB set up for standard debug using the on-board J-Link debugger and on-board 3.3V power supply.



**Figure 2. Apollo2 EVB using On-board J-Link Debugger**

**NOTE:** Due to an I/O voltage contention issue with the J-Link processor, the EVB only supports 3.3V operation.

The debug interface is supported by standard J-Link drivers from Segger. Please refer to section 5 “Software Development Tools for the Apollo2 EVB” for more details on J-Link debug support.

This EVB also supports the use of an external Cortex SWD debug interface through a standard 10-pin debug header (DEBUG IN - J2) as shown in Figure 3.

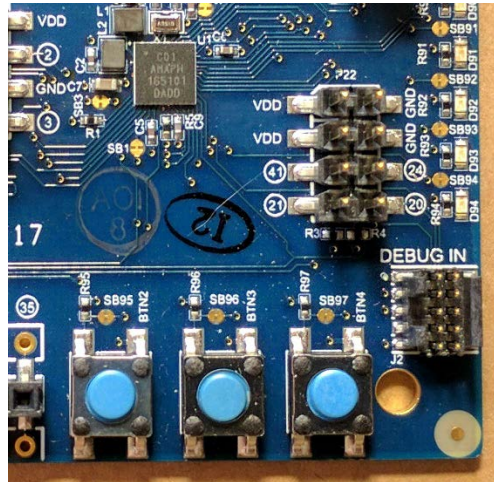


Figure 3. Apollo2 EVB's Cortex DEBUG IN Header (J2)

No jumper changes are required to use an external debug adapter. Simply connect the external debug adapter with a 10-pin ribbon cable connector to the "DEBUG IN" header.

The EVB also offers the ability to be used as a J-Link debug adapter for any target board that has an Apollo family MCU (Apollo1 or Apollo2).

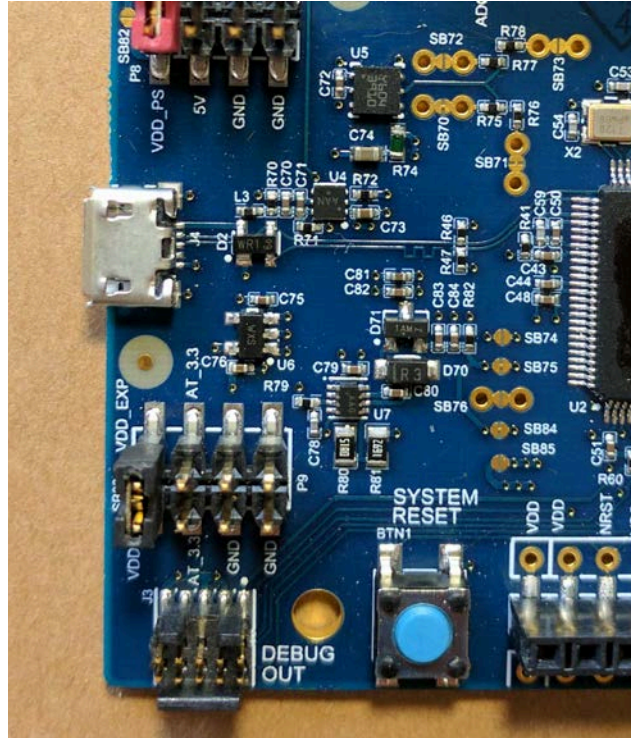


Figure 4. Apollo2 EVB's DEBUG OUT Header (J3)

To utilize this functionality, use a 10-pin low-pitch standard debug connector to connect the “DEBUG OUT” header (J3) on the EVB to the debug header on the target board. The EVB will automatically detect when the “DEBUG OUT” header is connected to another target board and reconfigure the integrated J-Link to connect to this external board rather than the onboard Apollo2.

**Note:** A voltage on VDD\_EXT\_DBG (pin 1) through the 10-pin header is required for the automatic switch. Also, to avoid voltage level conflicts on the debug I/O, VDDIO on the J-Link processor will need to be changed to VDD\_EXT\_DBG by cutting SB5 and connecting SB6 if VDD\_EXT\_DBG doesn't match the on-board voltage (VDD\_PS by default).



## 5. Software Development Tools for the Apollo2 EVB

The standard Segger J-Link debug interface is used on the Apollo2 EVB. Please install the latest Beta Segger J-Link software, and configure your preferred development IDE (Keil, IAR, or Eclipse) to use J-Link debug interface.

Links to development tools that support Apollo2:

- SEGGER J-Link Software 6.14 (Beta) or newer: [https://www.segger.com/downloads/jlink\\_beta](https://www.segger.com/downloads/jlink_beta)
- KEIL uVision MDK523 or newer: <https://www.keil.com/demo/eval/arm.htm>
- New Keil Pack (Also used by Eclipse) at: <http://www.keil.com/dd2/pack/#/third-party-download-dialog>
- IAR Version 7.80.4 or 8.10.1 or newer: <https://www.iar.com/iar-embedded-workbench/tools-for-arm/arm-cortex-m-edition/>

Regardless of preferred IDE, please install the Segger J-Link software. All three of the above development environments support J-Link, but you must have the latest J-Link software installed. Most alternate development environments also are supported by J-Link.

Please refer to the [AmbiqSuite Getting Started Guide \(AMSDKGS\)](#) for more details on setting up development IDEs to use J-Link.

## 6. Measuring MCU Power Consumption on the EVB

To measure only the current consumed by the MCU you can connect a current meter to the header next to the power switch, P8, by removing the red jumper in Figure 5 below and measure current across these two pins.

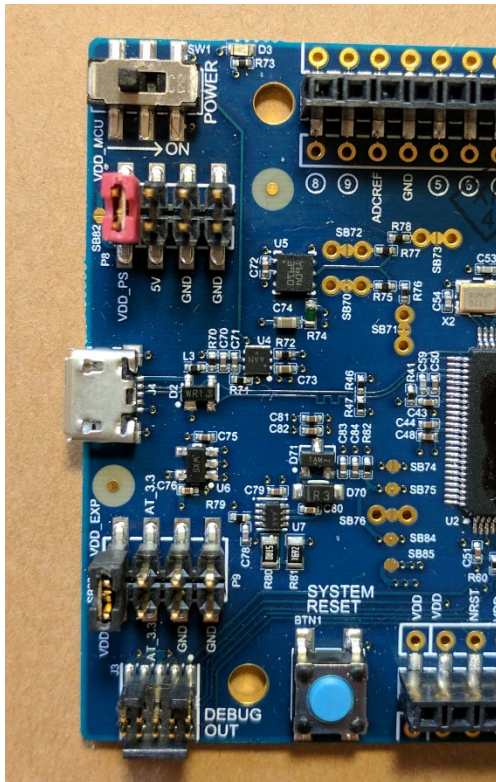


Figure 5. Red Jumper across VDD\_PS and VDD\_MCU on Header P8

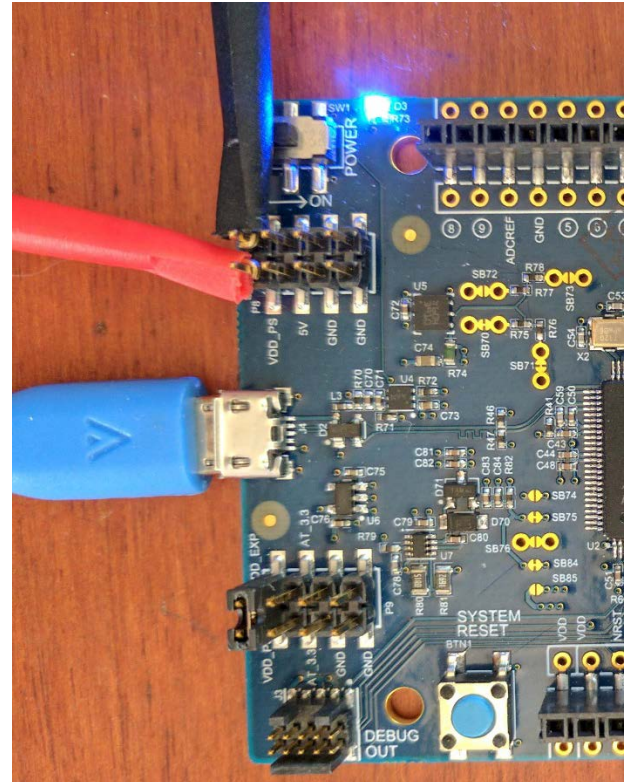


Figure 6. Current Measuring Leads across VDD\_PS and VDD\_MCU on Header P8

If not measuring power consumption, make sure this jumper is in place connecting VDD\_PS (pin 1) and VDD\_MCU (pin 2) on P8 to provide the on-board regulated 3.3V supply to the MCU V<sub>DD</sub>.

This header is also where an external voltage supply can be connected to the MCU, by removing this jumper and provide desired supply to VDD\_MCU on P8. Note that if attaching any expansion boards, the voltage to VDD\_EXP (pin 2) on P9 must be the same as VDD\_MCU on P8. Default jumper settings connect VDD\_MCU and VDD\_EXP to the same onboard 3.3V regulator. If not connecting any expansion boards then it is not require to match VDD\_EXP to MCU V<sub>DD</sub>.

**Revision 1.0, June 2017**

---

**Contact Information**

<b>Address</b>	Ambiq Micro, Inc. 6500 River Place Blvd. Building 7, Suite 200 Austin, TX 78730-1156
<b>Phone</b>	+1 (512) 879-2850
<b>Website</b>	<a href="http://www.ambiqmicro.com/">http://www.ambiqmicro.com/</a>
<b>General Information</b>	<a href="mailto:info@ambiqmicro.com">info@ambiqmicro.com</a>
<b>Sales</b>	<a href="mailto:sales@ambiqmicro.com">sales@ambiqmicro.com</a>
<b>Technical Support</b>	<a href="mailto:support@ambiqmicro.com">support@ambiqmicro.com</a>

**Legal Information and Disclaimers**

AMBIQ MICRO INTENDS FOR THE CONTENT CONTAINED IN THE DOCUMENT TO BE ACCURATE AND RELIABLE. THIS CONTENT MAY, HOWEVER, CONTAIN TECHNICAL INACCURACIES, TYPOGRAPHICAL ERRORS OR OTHER MISTAKES. AMBIQ MICRO MAY MAKE CORRECTIONS OR OTHER CHANGES TO THIS CONTENT AT ANY TIME. AMBIQ MICRO AND ITS SUPPLIERS RESERVE THE RIGHT TO MAKE CORRECTIONS, MODIFICATIONS, ENHANCEMENTS, IMPROVEMENTS AND OTHER CHANGES TO ITS PRODUCTS, PROGRAMS AND SERVICES AT ANY TIME OR TO DISCONTINUE ANY PRODUCTS, PROGRAMS, OR SERVICES WITHOUT NOTICE.

THE CONTENT IN THIS DOCUMENT IS PROVIDED "AS IS". AMBIQ MICRO AND ITS RESPECTIVE SUPPLIERS MAKE NO REPRESENTATIONS ABOUT THE SUITABILITY OF THIS CONTENT FOR ANY PURPOSE AND DISCLAIM ALL WARRANTIES AND CONDITIONS WITH REGARD TO THIS CONTENT, INCLUDING BUT NOT LIMITED TO, ALL IMPLIED WARRANTIES AND CONDITIONS OF MERCHANTABILITY, FITNESS FOR A PARTICULAR PURPOSE, TITLE AND NON-INFRINGEMENT OF ANY THIRD PARTY INTELLECTUAL PROPERTY RIGHT.

AMBIQ MICRO DOES NOT WARRANT OR REPRESENT THAT ANY LICENSE, EITHER EXPRESS OR IMPLIED, IS GRANTED UNDER ANY PATENT RIGHT, COPYRIGHT, MASK WORK RIGHT, OR OTHER INTELLECTUAL PROPERTY RIGHT OF AMBIQ MICRO COVERING OR RELATING TO THIS CONTENT OR ANY COMBINATION, MACHINE, OR PROCESS TO WHICH THIS CONTENT RELATE OR WITH WHICH THIS CONTENT MAY BE USED.

USE OF THE INFORMATION IN THIS DOCUMENT MAY REQUIRE A LICENSE FROM A THIRD PARTY UNDER THE PATENTS OR OTHER INTELLECTUAL PROPERTY OF THAT THIRD PARTY, OR A LICENSE FROM AMBIQ MICRO UNDER THE PATENTS OR OTHER INTELLECTUAL PROPERTY OF AMBIQ MICRO.

INFORMATION IN THIS DOCUMENT IS PROVIDED SOLELY TO ENABLE SYSTEM AND SOFTWARE IMPLEMENTERS TO USE AMBIQ MICRO PRODUCTS. THERE ARE NO EXPRESS OR IMPLIED COPYRIGHT LICENSES GRANTED HEREUNDER TO DESIGN OR FABRICATE ANY INTEGRATED CIRCUITS OR INTEGRATED CIRCUITS BASED ON THE INFORMATION IN THIS DOCUMENT. AMBIQ MICRO RESERVES THE RIGHT TO MAKE CHANGES WITHOUT FURTHER NOTICE TO ANY PRODUCTS HEREIN. AMBIQ MICRO MAKES NO WARRANTY, REPRESENTATION OR GUARANTEE REGARDING THE SUITABILITY OF ITS PRODUCTS FOR ANY PARTICULAR PURPOSE, NOR DOES AMBIQ MICRO ASSUME ANY LIABILITY ARISING OUT OF THE APPLICATION OR USE OF ANY PRODUCT OR CIRCUIT, AND SPECIFICALLY DISCLAIMS ANY AND ALL LIABILITY, INCLUDING WITHOUT LIMITATION CONSEQUENTIAL OR INCIDENTAL DAMAGES. "TYPICAL" PARAMETERS WHICH MAY BE PROVIDED IN AMBIQ MICRO DATA SHEETS AND/OR SPECIFICATIONS CAN AND DO VARY IN DIFFERENT APPLICATIONS AND ACTUAL PERFORMANCE MAY VARY OVER TIME. ALL OPERATING PARAMETERS, INCLUDING "TYPICALS" MUST BE VALIDATED FOR EACH CUSTOMER APPLICATION BY CUSTOMER'S TECHNICAL EXPERTS. AMBIQ MICRO DOES NOT CONVEY ANY LICENSE UNDER NEITHER ITS PATENT RIGHTS NOR THE RIGHTS OF OTHERS. AMBIQ MICRO PRODUCTS ARE NOT DESIGNED, INTENDED, OR AUTHORIZED FOR USE AS COMPONENTS IN SYSTEMS INTENDED FOR SURGICAL IMPLANT INTO THE BODY, OR OTHER APPLICATIONS INTENDED TO SUPPORT OR SUSTAIN LIFE, OR FOR ANY OTHER APPLICATION IN WHICH THE FAILURE OF THE AMBIQ MICRO PRODUCT COULD CREATE A SITUATION WHERE PERSONAL INJURY OR DEATH MAY OCCUR. SHOULD BUYER PURCHASE OR USE AMBIQ MICRO PRODUCTS FOR ANY SUCH UNINTENDED OR UNAUTHORIZED APPLICATION, BUYER SHALL INDEMNIFY AND HOLD AMBIQ MICRO AND ITS OFFICERS, EMPLOYEES, SUBSIDIARIES, AFFILIATES, AND DISTRIBUTORS HARMLESS AGAINST ALL CLAIMS, COSTS, DAMAGES, AND EXPENSES, AND REASONABLE ATTORNEY FEES ARISING OUT OF, DIRECTLY OR INDIRECTLY, ANY CLAIM OF PERSONAL INJURY OR DEATH ASSOCIATED WITH SUCH UNINTENDED OR UNAUTHORIZED USE, EVEN IF SUCH CLAIM ALLEGES THAT AMBIQ MICRO WAS NEGLIGENT REGARDING THE DESIGN OR MANUFACTURE OF THE PART.