

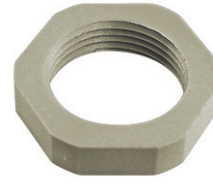
Locknuts *Polyamide / Stainless Steel*

Material:

- Polyamide 6
- 25 % glass fiber reinforced

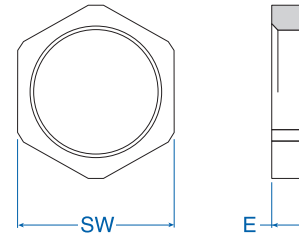
Characteristic feature:

- PG / metric and NPT thread



Temperature Range
-40 to 100°C
(-40 to 212°F)

Thread	Thickness (E) mm	SW mm	Cat. No. Light grey	Cat. No. Black	Std. Pk.
PG (once according to DIN 46 320)					
PG 7	5	19	7211 881	7211 851	50
PG 9	5	22	7211 882	7211 852	50
PG 11	5	24	7211 883	7211 853	50
PG 13.5	6	27	7211 884	7211 854	50
PG 16	6	30	7211 885	7211 855	50
PG 21	6.5	36	7211 886	7211 856	20
PG 29	7.5	46	7211 887	7211 857	20
PG 36*	8	60	7211 888	7211 858	10
PG 42*	9	65	7211 889	7211 859	5
PG 48*	9.5	70	7211 890	7211 860	5
Metric					
M 12 x 1.5	5	19	7211 979	7211 974	50
M 16 x 1.5	5	22	7211 980	7211 975	50
M 20 x 1.5	5	24	7211 981	7211 976	50
M 25 x 1.5	6	30	7211 982	7211 977	50
M 32 x 1.5	7.5	38	7211 983	7211 978	50
M 40 x 1.5	8	50	7211 984	7211 990	20
M 50 x 1.5*	9	60	7211 985	7211 991	10
M 63 x 1.5*	10	75	7211 986	7211 992	5
NPT					
NPT 3/8"	5	22	7211 485	7211 495	50
NPT 1/2"	6	27	7211 486	7211 496	50
NPT 3/4"	6.5	36	7211 487	7211 497	25
NPT 1"	7	41	7211 488	7211 498	20



* Not glass fiber reinforced

Material:

- Stainless Steel
- 1.4404 / INOX 316L

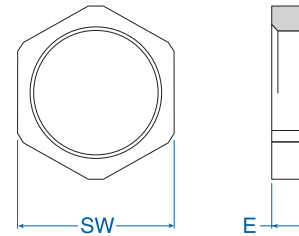
Characteristic feature:

- Metric thread



Stainless Steel

Thread	Thickness (E) mm	SW mm	Cat. No.	Std. Pk.
Metric				
M 12 x 1.5	3	15	6010112	50
M 16 x 1.5	3	19	6010116	50
M 20 x 1.5	3.5	24	6010120	50
M 25 x 1.5	3.5	30	6010125	25
M 32 x 1.5	4.5	35	6010132	20
M 40 x 1.5	4.5	45	6010140	10
M 50 x 1.5	5.5	55	6010150	10
M 63 x 1.5	6	70	6010163	5



This is one of our most popular series and is usually kept in stock.

Material:

- Nickel-plated brass

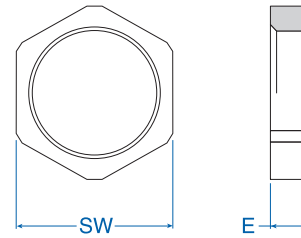
Characteristics:

- PG and Metric thread



Nickel-Plated Brass

Thread	Thickness (E) mm	SW mm	Cat. No.	Std. Pk.
PG (once according to DIN 46320)				
PG 7	2.9	15	6000070	50
PG 9	2.9	18	6000096	50
PG 11	2.9	21	6000118	50
PG 13.5	3.1	23	6000134	50
PG 16	3.1	26	6000169	50
PG 21	3.6	32	6000215	20
PG 29	4.1	41	6000290	20
PG 36	5.1	51	6000363	10
PG 42	5.1	60	6000428	5
PG 48	5.6	64	6000487	5
Metric				
M 12 x 1.5	3	15	6004121	50
M 16 x 1.5	3	20	6004164	50
M 20 x 1.5	3.5	24	6004202	50
M 25 x 1.5	3.5	30	6004253	25
M 32 x 1.5	4.5	35	6004326	20
M 40 x 1.5	4.5	45	6004407	10
M 50 x 1.5	4.5	55	6004504	10
M 63 x 1.5	6	70	6004636	5


Material:

- Nickel-plated brass

Characteristics:

- PG and Metric thread

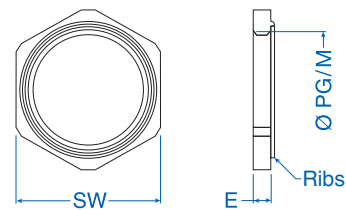
Applications:

- EMC applications



Nickel-Plated Brass, Ribbed

Thread	Thickness (E) mm	SW mm	Cat. No.	Std. Pk.
PG				
PG 7	2.9	15	6011007	50
PG 9	2.9	18	6011009	50
PG 11	3.1	21	6011011	50
PG 13.5	3.1	23	6011013	50
PG 16	3.1	26	6011016	50
PG 21	3.6	32	6011021	20
PG 29	4.1	41	6011029	20
PG 36	5.1	51	6011036	10
PG 42	5.1	60	6011042	10
PG 48	5.6	64	6011048	10
Metric				
M 12 x 1.5	3	15	6011112	50
M 16 x 1.5	3	20	6011116	50
M 20 x 1.5	3.5	24	6011120	50
M 25 x 1.5	3.5	30	6011125	25
M 32 x 1.5	4.5	35	6011132	20
M 40 x 1.5	4.5	45	6011140	10
M 50 x 1.5	5.5	55	6011150	10
M 63 x 1.5	6	70	6011163	10



This is one of our most popular series and is usually kept in stock.