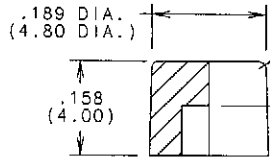
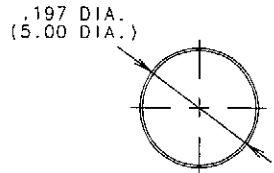


PART NUMBER EXAMPLE
38HH2040-A-2

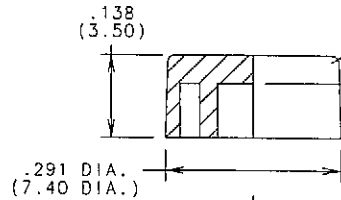
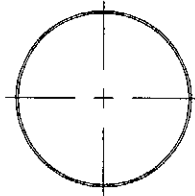
MODEL #	SIZE	COLOR
38HH2040	A = .197" DIA. B = .291" DIA.	1 = WHITE 2 = BLACK 3 = RED 4 = ORANGE 5 = YELLOW 6 = GREEN 7 = BLUE 8 = BROWN 9 = GRAY

NOTES:
1. CAPS FIT SUB-MINIATURE PUSHBUTTON SWITCHES

"A" SIZE



"B" SIZE



UNLESS OTHERWISE SPECIFIED TOLERANCES AND DIMENSIONS ARE IN INCHES LINEAR ± .015 DIAMETERS ± .010 ANGULAR ± 1° LIMITS APPLY BEFORE FINISHING DO NOT SCALE THIS PRINT	APPROVED DATE	GRAYHILL, INC. 561 HILLGROVE AVE. PHONE (708) LA GRANGE, IL 60525 354-1040	
	RTK 11-3-05	CHECKED DATE	BUTTON CAP
CRITICAL CHARACTERISTIC FLAGS PER GRAYHILL SPEC.SOP2338 -- CRITICAL CHARACTERISTIC FLAG -- Cpk REQUIRED -- S.P.C. FLAG (CONTROL CHART REQ'D ON FEATURE SPECIFIED)	JOD 11-3-05	DRAWN DATE	
		CWS 11-3-05	CWS 11-3-05
	FINISH	CAGE NO.	DWG. NO.
	MATERIAL	81073	B 38HH2040-X
		SIZE	ISSUE
			B
CADAM DRAWING: 38HH2040-X_B_001	SCALE 5:1	UNIT WEIGHT	SHEET 1 OF 1