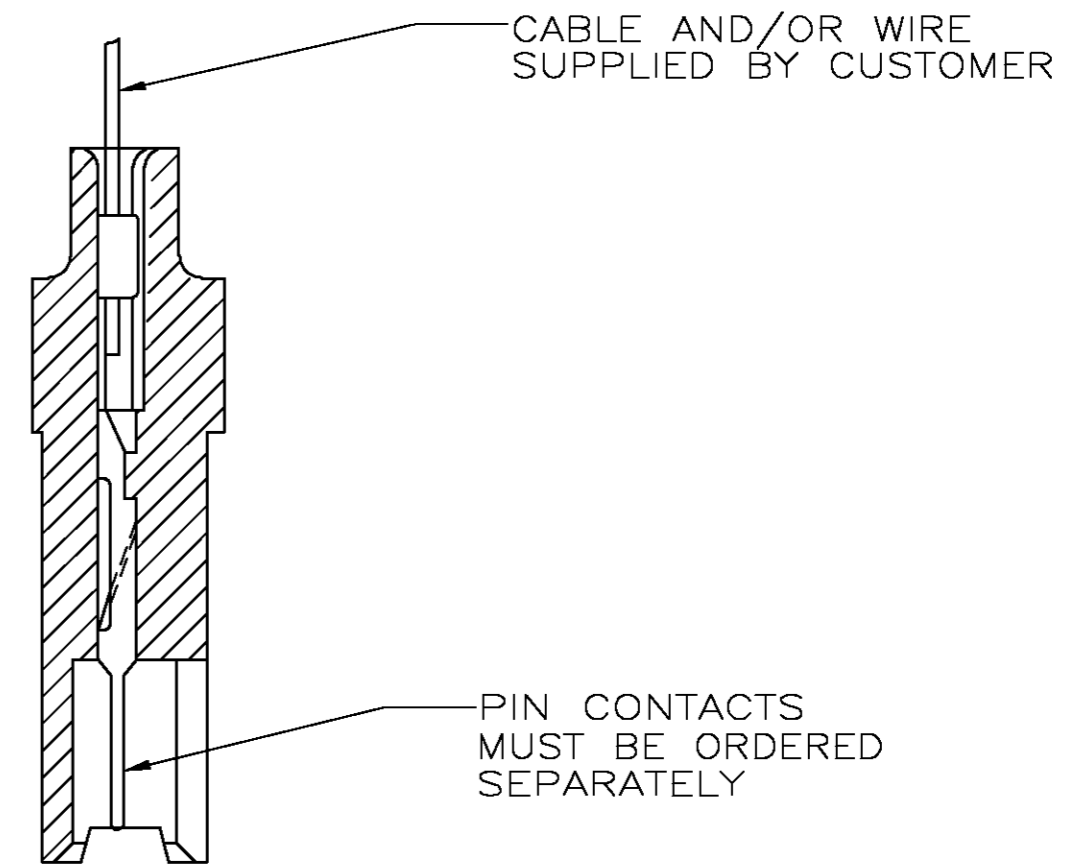
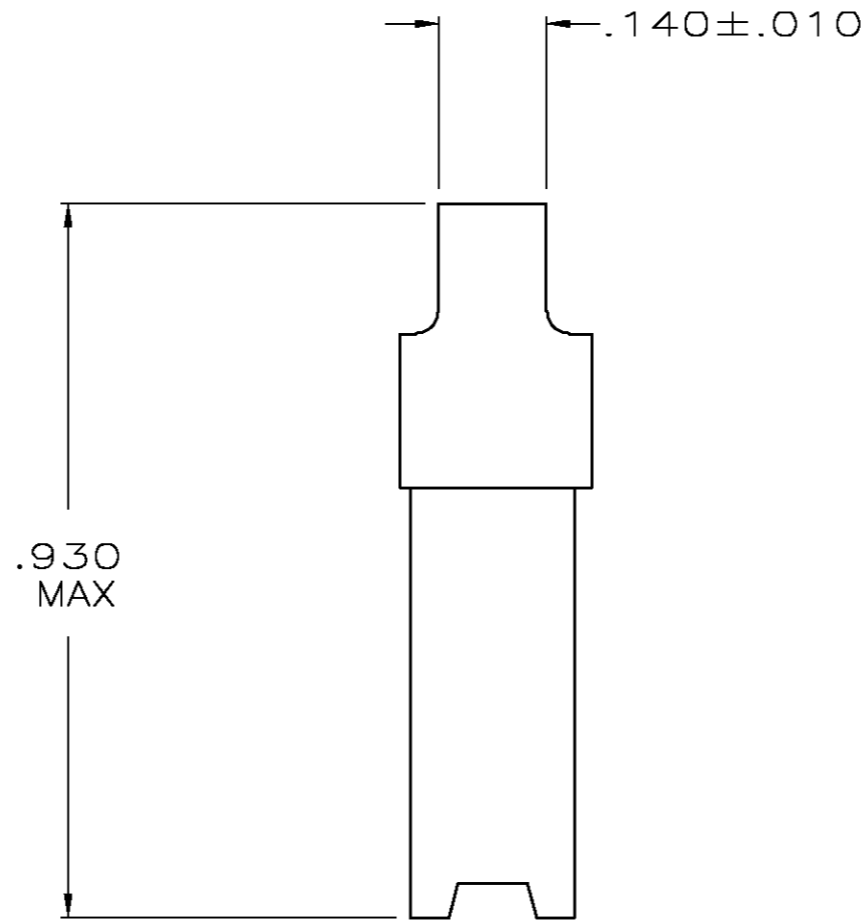
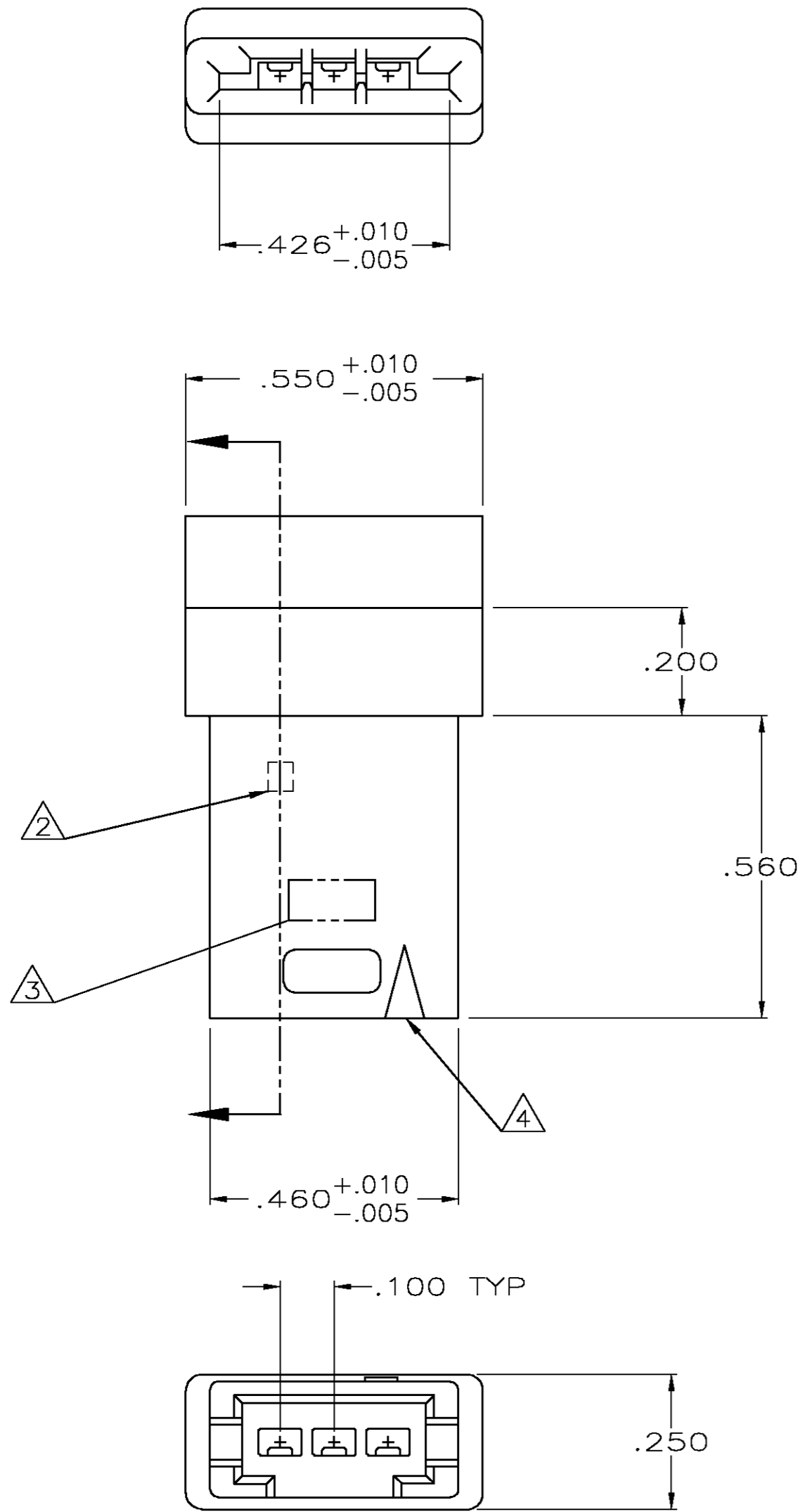


THIS DRAWING IS UNPUBLISHED. RELEASED FOR PUBLICATION  
 © COPYRIGHT BY TYCO ELECTRONICS CORPORATION. ALL RIGHTS RESERVED.

| LOC | DIST | REVISIONS |     |                             |         |     |      |
|-----|------|-----------|-----|-----------------------------|---------|-----|------|
| GP  | 00   | P         | LTR | DESCRIPTION                 | DATE    | DWN | APVD |
|     |      | U         |     | REVISED PER EC OS13-0493-03 | 03MAR04 | BM  | JG   |



SECTION X-X  
 CRIMPED CONTACT SHOWN FOR REFERENCE ONLY

1. HOUSING WILL ACCOMMODATE FLEXIBLE FLAT CONDUCTOR CABLE .050 WIDE CONDUCTORS ON .100 CENTERS AND/OR #32-22 AWG WIRE WITH INSULATION RANGE .025-.056 DIAMETER.

- ② CIRCUIT IDENT NO MOLDED AT FIRST AND THIRD POSITION.
- ③ AMP TRADEMARK MOLDED IN THIS AREA.
- ④ INDICATES FIRST POSITION.

|  |  |                            |   |                    |
|--|--|----------------------------|---|--------------------|
| THIS DRAWING IS A CONTROLLED DOCUMENT.   |  | DWN B. MCMASTER 03MAR04    | Tyco Electronics Corporation<br>Harrisburg, Pa 17105-3608 |                    |
| DIMENSIONS: mm [INCHES]  |  | CHK S. BOLASH 03MAR04      |   |                    |
| TOLERANCES UNLESS OTHERWISE SPECIFIED:   |  | APVD M. WALMSLEY 03MAR04   | NAME HOUSING, PIN, W/DETENT SLOTS, .100ϕ, FFC             |                    |
| 0 PLC ± -<br>1 PLC ± -<br>2 PLC ± -<br>3 PLC ± .005<br>4 PLC ± - ± -<br>ANGLES ± - ± -<br>FINISH - |  | PRODUCT SPEC 108-9024      | RESTRICTED TO -   |                    |
| MATERIAL THERMOPLASTIC GLASS FILLED COLOR: BLACK   |  | APPLICATION SPEC 114-16015 | SIZE A2   | CAGE CODE 00779    |
|  |  | WEIGHT -                   | DRAWING NO C=494032                                       |                    |
|  |  | CUSTOMER DRAWING           | SCALE 4:1   | SHEET 1 OF 1 REV U |